

NOTE:  
 3107.6.2.1.6 ALL WINDOWS AND GLASS DOORS VISIBLE FROM THE MARINE TURTLE NESTING AREAS OF THE BEACH MUST BE TINTED TO A TRANSMITTANCE VALUE (LIGHT TRANSMISSION FROM INSIDE TO OUTSIDE) OF 45% OR LESS THROUGH THE USE OF TINTED GLASS, WINDOW FILM, OR SIMILAR LIGHT CONTROL MEASURES. THE BUILDING DEPARTMENT SHALL SUSPEND ANY PERMITTED CONSTRUCTION WHEN THE PERMITS HAS NOT PROVIDED THE REQUIRED PROTECTION FOR MARINE TURTLES AND THEIR HABITAT.

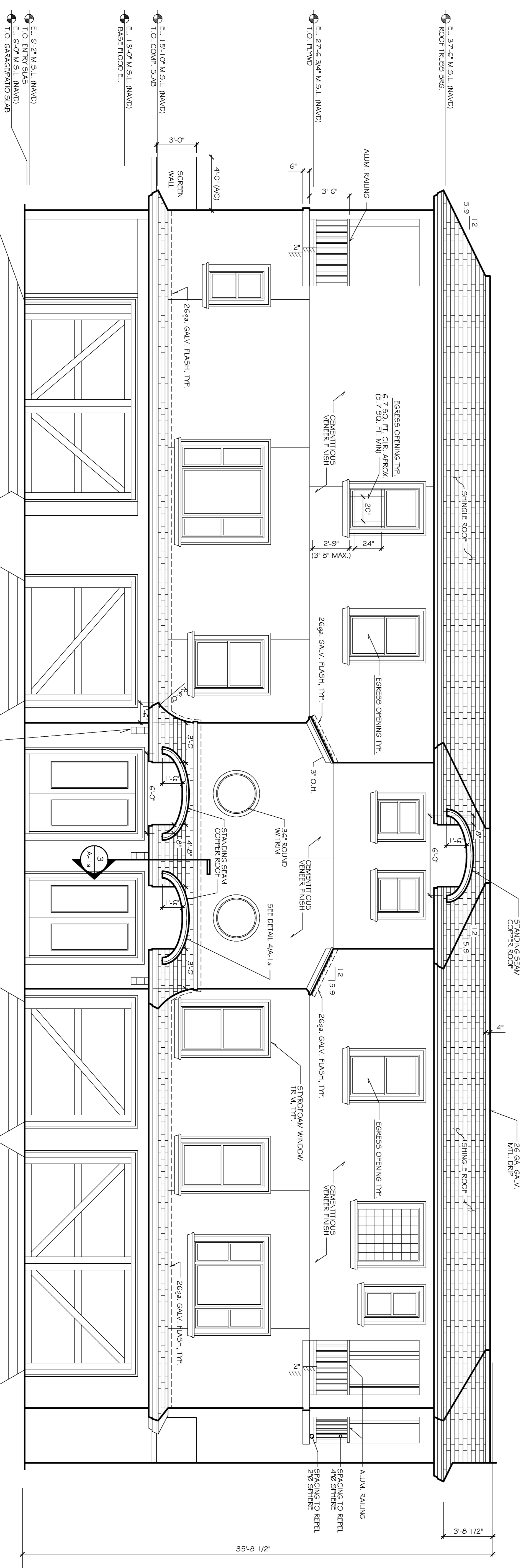
**WEST ELEVATION**

SCALE: 1/4" = 1'-0"

NOTE:  
 PROVIDE CONTROL JOINTS @ CEMENTITIOUS VENEER FINISH PER CODE (144 sq. ft. MAX.)

WALL AREA = 2444 sq. ft.  
 OPENING AREA = 649 sq. ft.  
 % OF OPENING = 27%  
 (MAX ALLOWED = 40%)

RAILING NOTE:  
 RAILINGS TO BE DESIGNED AND FABRICATED TO RESIST LATERAL LOADS OF 50PF OR 200 LBS CONCENTRATED APPLIED NON-COINCIDENTALLY SPINDLE SPACING TO REPRESENT EXISTING SPHERE TOE RAIL FIN. SPACE TO REFEL A 2Ø



**EAST ELEVATION**

SCALE: 1/4" = 1'-0"

WALL AREA = 2043 sq. ft.  
 OPENING AREA = 333 sq. ft.  
 % OF OPENING = 29%  
 (MAX ALLOWED = 40%)

SEE STRUCTURAL DRAWINGS FOR SHOW LOAD BEARING POINTS WALLS, COLUMNS & BEAMS

REVISIONS	DATE
1/30/05 CITY PLAN REVIEW	12/1/05

**BARRY P. ULLMANN, INC.**  
**ARCHITECT**  
 AA-C000961  
 615 S. MISSOURI AVE., SUITE B 727-441-4405  
 CLEARWATER, FLORIDA. 33756 ullmanninc1@aol.com

**DEL MAR @ SUNSET BEACH**  
 8425 W. GULF BOULEVAR  
 TREASURE ISLAND - FLORIDA

**303**

JOB NO. 20530  
 DRAWN BY R. S.  
 CHECKED BY B.P.L.  
 DATE 10/24/05  
 SHEET NO. A-6  
 OF 11