

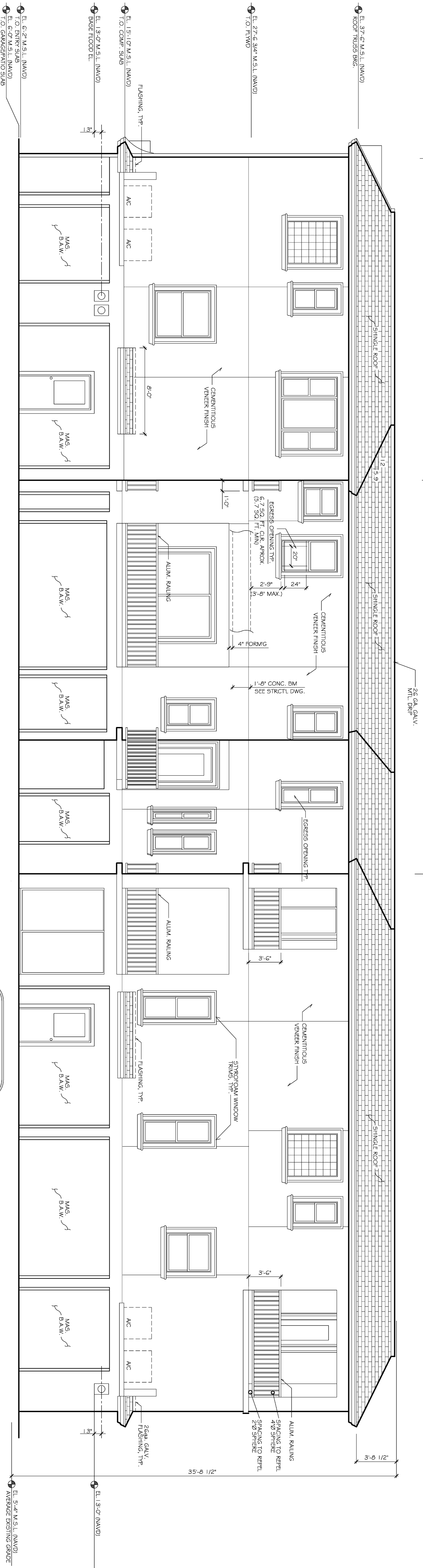
NORTH ELEVATION
SCALE: 1/4" = 1'-0"

WALL AREA = 940 sq. ft.
OPENING AREA = 109 sq. ft.
% OF OPENING = 12%
(MAX ALLOWED = 20%)

RAILING NOTE:
RAILINGS TO BE DESIGNED AND FABRICATED TO BE INSTALLED IN ACCORDANCE WITH SECTION 905 OF THE IBC AND TO BE APPLIED TO SPINDLE JOINTS AT ANY LOCATION IN ANY DIRECTION. SPINDLE SPACING TO REFEL A 4\"/>

NOTE:
PROVIDE CONTROL JOINTS @ CEMENTITIOUS VENEER FINISH PER CODE (1'-4\"/>

WALL AREA = 1567 sq. ft.
OPENING AREA = 284 sq. ft.
% OF OPENING = 18%
(MAX ALLOWED = 20%)



(COURTYARD VIEW)

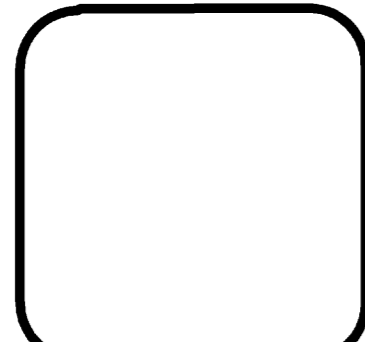
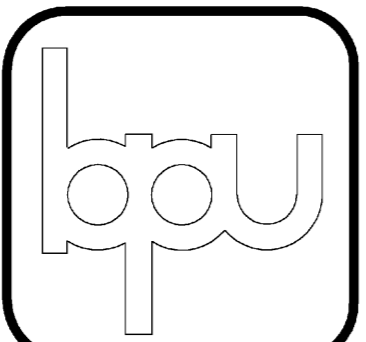
SOUTH ELEVATION
SCALE: 1/4" = 1'-0"

SEE STRUCTURAL DRAWINGS FOR DISJUNCTION DETAILS OF ALL SIGNIFICANT DRAMA JOINTS (WALLS, CEILING & FLOOR)

REVISIONS	DATE
11/30/05 CITY PLAN REVIEW	12/1/05

BARRY P. ULLMANN, INC.
ARCHITECT
AA-C000961
615 S. MISSOURI AVE., SUITE B 727-441-4405
CLEARWATER, FLORIDA 33756 ullmanninc1@aol.com

DEL MAR @ SUNSET BEACH
8425 W. GULF BOULEVARD
TREASURE ISLAND - FLORIDA



JOB NO.
20530
DRAWN BY
R.S.
CHECKED BY
B.P.L.
DATE
10/24/05
SHEET NO.
A-7